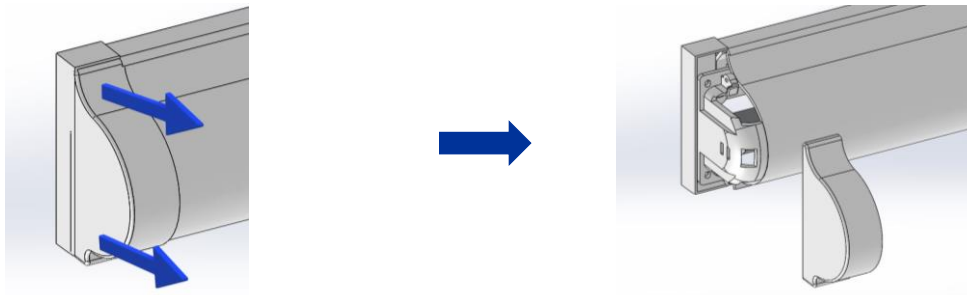
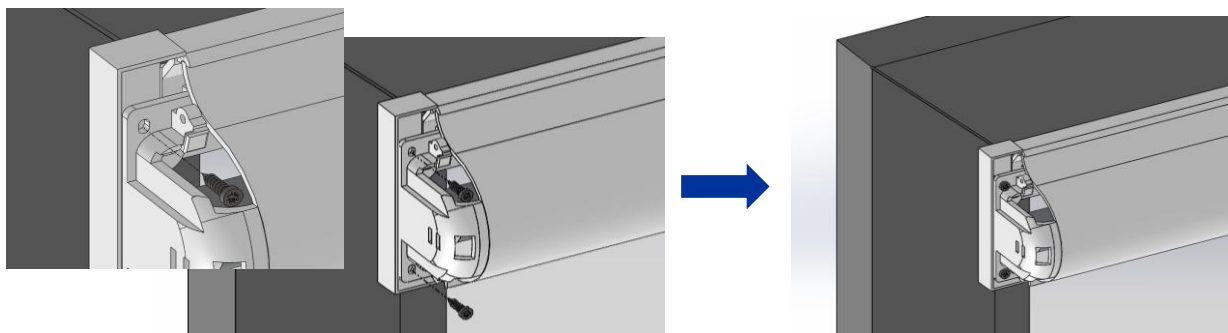


KASSETTRULOODE PAIGALDAMINE

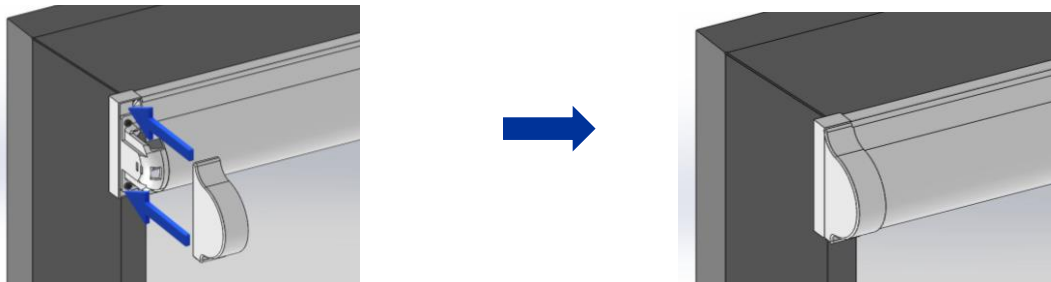
SAMM 1 - TÕMBA OTSAKORGID PESAST VÄLJA



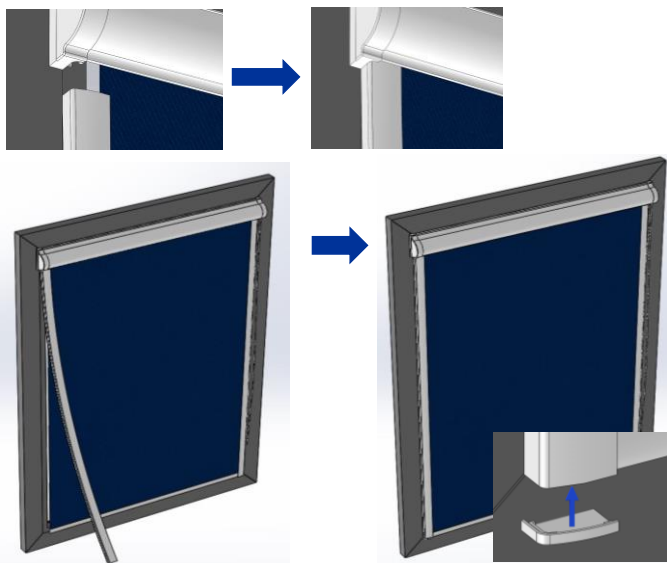
SAMM 2 - ASETA KASSETTRULOOK AKNARAAMI PEALE JA KINNITA KRUVID



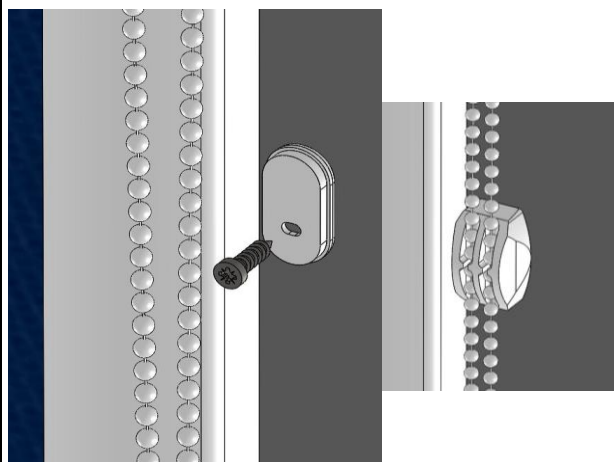
SAMM 3 - LÜKKA OTSAKORGID TAGASI PESASSE



SAMM 4 - LIIMI KÜJELIISTUD + KINNITA KÜJELIISTUDE OTSAKORGID



SAMM 5 - KINNITA KETIHOIDJA RAAMILE (~10CM KÕRGUSELE KETI ALT OTSAST*)



* Jälgi, et ketilukk ei jääks segama keti kinnitamist ketihoidjasse